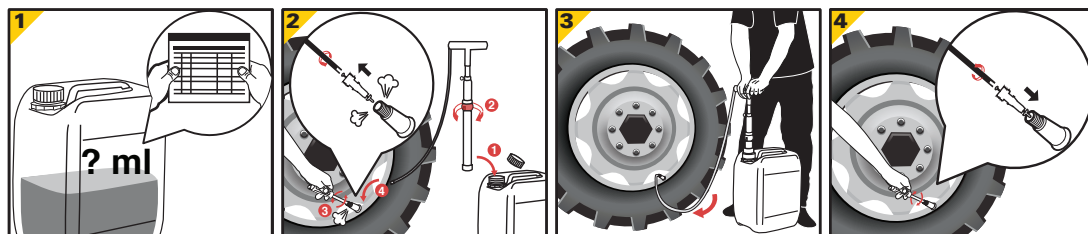


Tire Size	Rim Ø (in)	Normal protection	Heightened protection	Maximum protection
		Sealant (L)	Sealant (L)	Sealant (L)
20 Inch Rims				
10.00	20	2.1	4.3	8.9
12.00	20	2.8	5.7	10.7
14.50	20	3.6	7.1	14.2
16.00/70	20	4.3	8.5	16.9
21.00/80	20	5.0	10.0	19.6
22 Inch Rims				
12.00	22	3.0	6.1	11.6
22.5 Inch Rims				
12.00	22.5	3.0	6.1	11.6
18.00	22.5	4.8	9.6	18.7
23.00	22.5	5.9	11.6	23.1
24 Inch Rims				
12.00	24	3.0	6.1	12.1
12.40	24	3.2	6.2	12.5
14.00	24	3.6	7.1	14.2
14.90/13	24	3.9	7.8	15.1
18	24	5.3	10.7	21.4
21	24	5.9	11.6	23.1
25 Inch Rims				
16.00	25	4.5	8.9	17.8
17.50	25	5.3	10.7	21.4
18.00	25	5.5	11.6	23.1
20.50	25	6.1	12.5	24.9
21.00	25	6.1	12.5	24.9
23.50	25	6.9	13.4	26.7
26.50	25	7.7	15.1	30.3
29.50	25	8.2	16.0	32.0
385-95	25	3.4	6.8	13.4
445-95	25	4.3	8.5	17.8
525-80	25	5.5	11.6	23.1
29 Inch Rims				
29.5	29	10.7	21.4	42.7

Tire Size	Rim Ø (in)	Normal protection	Heightened protection	Maximum protection
		Sealant (L)	Sealant (L)	Sealant (L)
33 Inch Rims				
18.00	33	7.1	14.2	28.5
21.00	33	8.0	16.0	32.0
24.00	33	9.3	17.8	35.6
35/65	33	14.1	28.5	57.0
45 Inch Rims				
45/65	45	22.3	44.5	89.0
49 Inch Rims				
18.00	49	9.8	19.6	39.2
24.00	49	12.5	24.9	49.8
27.00	49	13.4	26.7	53.4
31.00/80	49	15.1	30.3	60.5
51 Inch Rims				
30.00	51	16.0	32.0	62.3
33.00	51	18.7	35.6	71.2
36.00	51	19.6	39.2	80.1
37.50	51	21.4	42.7	85.4
50.00	51	27.6	53.4	106.8
57 Inch Rims				
37.00	57	23.1	46.3	89.0
40.00	57	26.7	53.4	106.8
50.00/90	57	35.6	71.2	142.4
59.5 Inch Rims				
33.00	59.5	22.3	44.5	89.0
36.00	59.5	24.0	48.1	96.1
39.00	59.5	28.5	57.0	111.3

The amount of Heavy Duty preventive tire sealant required in your field is defined by the tire volume of the machinery and the harshness of your working area. Please choose the sealant amount between "Normal protection", "Heightened protection" and "Maximum protection" depending on the frequency and seriousness of tire punctures in your equipment's work environment.



Contact us:
Active Tools (Europe) GmbH
Oerlinghauser Straße 65,
32107 Bad Salzufen, Germany
T.: +49 (0) 5222 944 97-0



20 L Jug



1000 L IBC Tank

HEAVY DUTY

Safe guarding tires with a protective layer of sealant preventing punctures up to 16 mm.



my-airman.com

Heavy Duty is the preventive tire sealant solution from AirMan® for machinery in construction, mining and groundwork. Preventive measures are crucial when a single flat tire can jeopardize deadlines and cause delays in many areas of your operation. AirMan® Heavy Duty is designed for the larger geometries of tires as well as for the typically more severe ruptures occurring in this field.

